

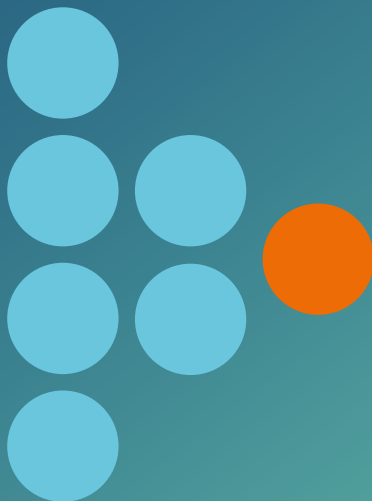
////
SOLUTION

Neuro Oncology

FMRI | CEST | ASL | PERF. DSC | PERF. DCE | DIFFUSION | DTI

MRI

Simplify review,
amplify insights



Olea
medical

NEURO ONCOLOGY SOLUTION: SIMPLIFY REVIEW, AMPLIFY INSIGHTS

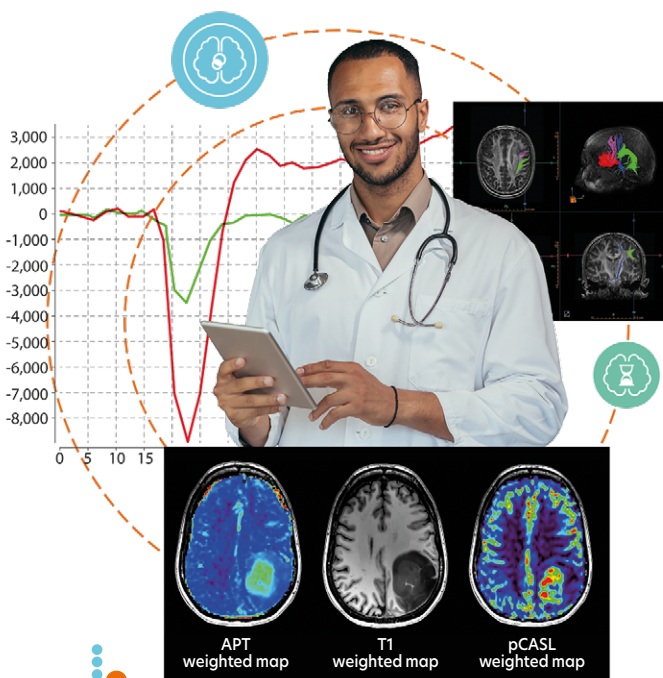


Optimize operational efficiency and ensure optimal consistency through integrated post-processing tools specifically designed for your PACS environment.

This solution provides access to key imaging outputs such as support for brain abnormalities identification, and perfusion parameter analysis directly within the clinical process. It aims to reduce the workflow interruptions and to facilitate expert assessment.

By automating and standardizing certain post-processing tasks, our solution supports consistent image analysis and helps reduce manual workload. It enables access to quantitative and qualitative imaging information that can assist health-care professionals in the review and interpretation of brain imaging studies.

Processed image series are automatically transferred to your PACS, allowing for centralized access within your existing system infrastructure, without requiring additional standalone software.



Diffusion-weighted imaging

- ADC mapping

Perfusion-weighted imaging

- T2* Perfusion (DSC): parametric maps calculation such as CBF, CBV, CBV corrected, leakage correction, MTT, TTP, tMIP and Tmax
- T1 Perfusion (DCE): quantitative, semi-quantitative and qualitative parameters including K_{ep}, K_{trans}, VE, VP, and more

Robust automatic AIF

- Option for manual edition

Multi-parametric & Longitudinal Analysis

- Temporal subtraction and volume tracking

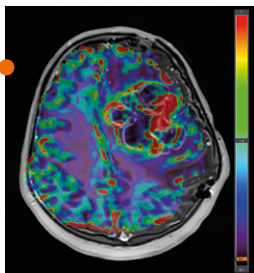
BOLD functional MRI & DTI Tractography

- Fiber tracts in 3D, BOLD laterality index, and export to neuronavigation systems

Research Modules

- Kurtosis advanced diffusion model
- pCASL
- APT-CEST

Corrected cerebral blood volume (CBV) map showing a high-grade tumor: the focal increase in CBV reflects the hypervascularization characteristic of malignant lesions.





Olea Medical, founded in 2008, develops innovative medical imaging software and solutions.

Since 2015, the company has been part of the Canon Group, thereby strengthening its ability to put technology at the service of healthcare.

Backed by multidisciplinary teams and partnerships with renowned medical and scientific institutions, Olea Medical has established itself today as a recognized international player. Its ambition remains unchanged: to improve patient care in order to save as many lives as possible, true to its mantra: **"Improved diagnosis for life"**.

Want more information about our solution?

**BOOK
A DEMO**



<https://www.olea-medical.com/en/request-a-demo/>



Olea
medical

ZI Athelia IV - 93, avenue des Sorbiers
13600 La Ciotat - FRANCE
PH +33 4 42 71 24 20 - FX +33 4 42 71 24 27



www.olea-medical.com

Olea Sphere® v3.0 and Functional MR v1.0 medical, medical imaging post-processing software, are medical devices manufactured and marketed by Olea Medical®. These medical devices are reserved for health professionals. These software programs have been designed and manufactured according to the EN ISO 13485 quality management system. Read the instructions in the notice carefully before any use. Instructions for Use are available on <https://www.olea-medical.com/en/customer/connexion/>

MANUFACTURER OLEA MEDICAL SAS (FRANCE)

• Europe: Medical devices Class IIa - CE 0459
• FDA (US): Medical devices Class II

BR-10-2025-OM-MKT-NEURO-ONCOLOGY-EN-V1