

# Case Report

MR Perfusion  
Bayesian  
Post-processing

Case 2



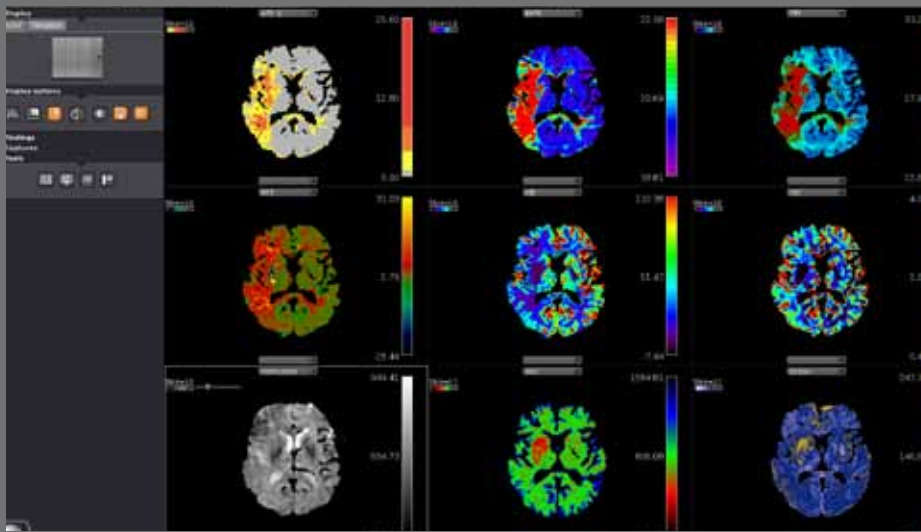
diagnosis for life™



Olea Medical  
93, avenue des Sorbiers  
13600 La Ciotat - FRANCE  
TEL +33 (0)4 42 71 24 20  
FAX +33 (0)4 42 71 24 27  
contact@olea-medical.com

Olea Medical USA  
1955 Massachusetts Avenue  
Suite 12 & 14  
02140 Cambridge, MA

BAYESIAN MR POST-PROCESSING



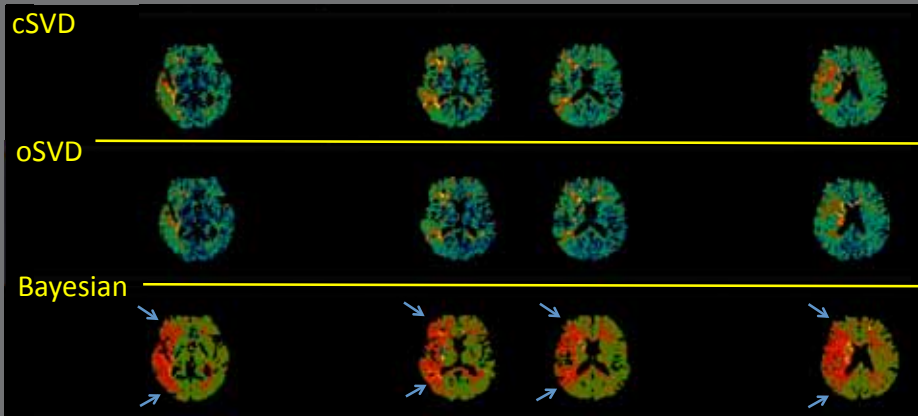
Example of Bayesian processing of MRI perfusion images (1,5T).

An acute stroke on the right MCA territory is noticed.

1.5T MRI

MR POST-PROCESSING

MTT maps (acute MCA M1 occlusion)



The distinction between grey and white matter and hypoperfused area is not clear on MTT maps with cSVD and oSVD deconvolution methods.

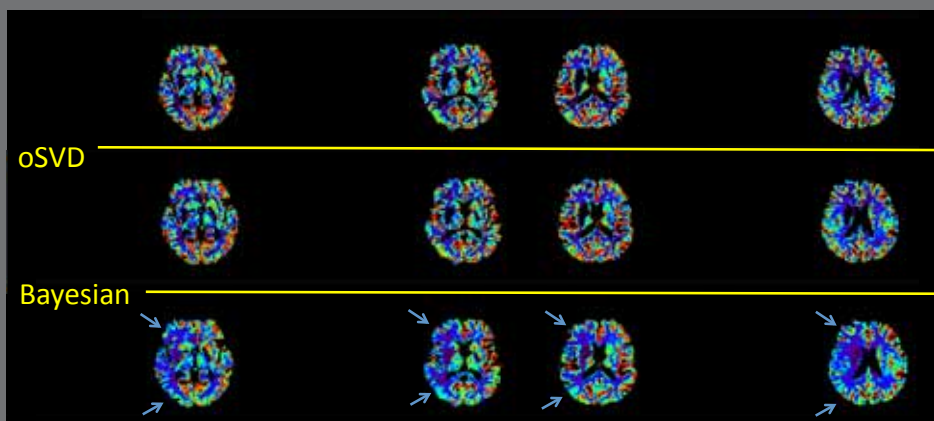
The Bayesian post-processing solves this problem and perfectly delimits the stroke area on the MTT map (blue pointers).

The physiological difference of perfusion between white and grey matter is also clearly visible on the contralateral side.

True theoretical borders of the MCA territory

1.5T MRI

CBF maps (acute MCA M1 occlusion)



The Bayesian post-processing offers a clearer emphasize on a decrease in cortical CBF in the whole left MCA territory (blue pointers) whereas it seems mainly preserved in the left MCA territory with cSVD and oSVD methods.

True theoretical borders of the MCA territory

1.5T MRI