

# Case Report

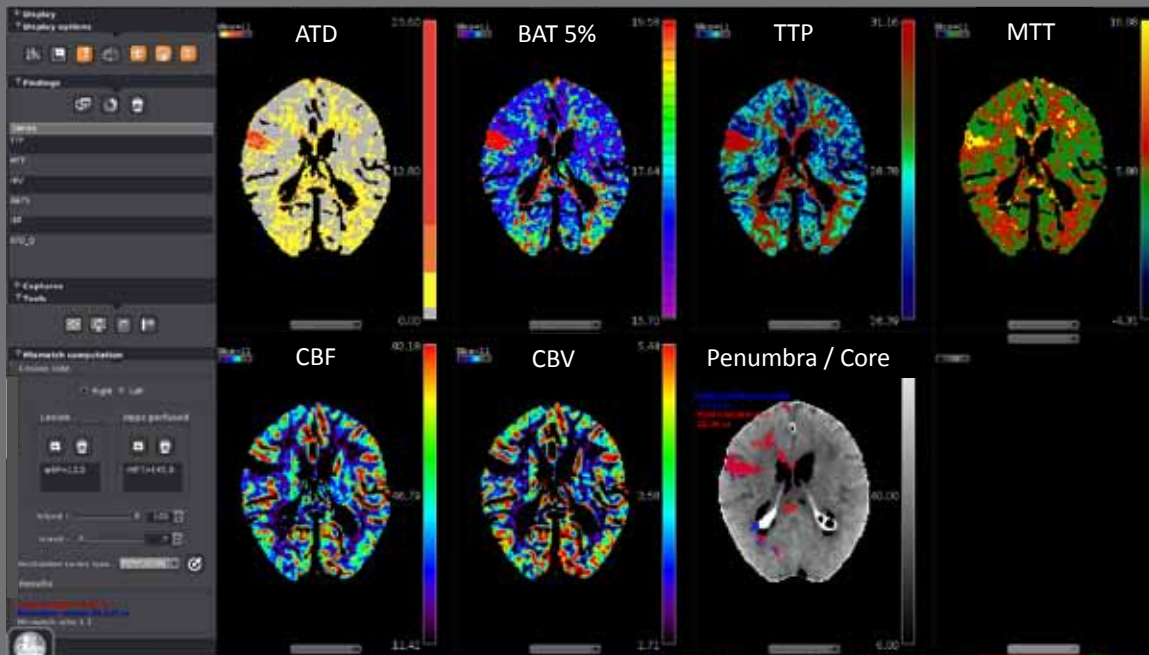
## CT Perfusion Bayesian Post-processing Case 2



Olea Medical  
93, avenue des Sorbiers  
13600 La Ciotat - FRANCE  
TEL +33 (0)4 42 71 24 20  
FAX +33 (0)4 42 71 24 27  
contact@olea-medical.com

Olea Medical USA  
1955 Massachusetts Avenue  
Suite 12 & 14  
02140 Cambridge, MA

BAYESIAN CT POST-PROCESSING

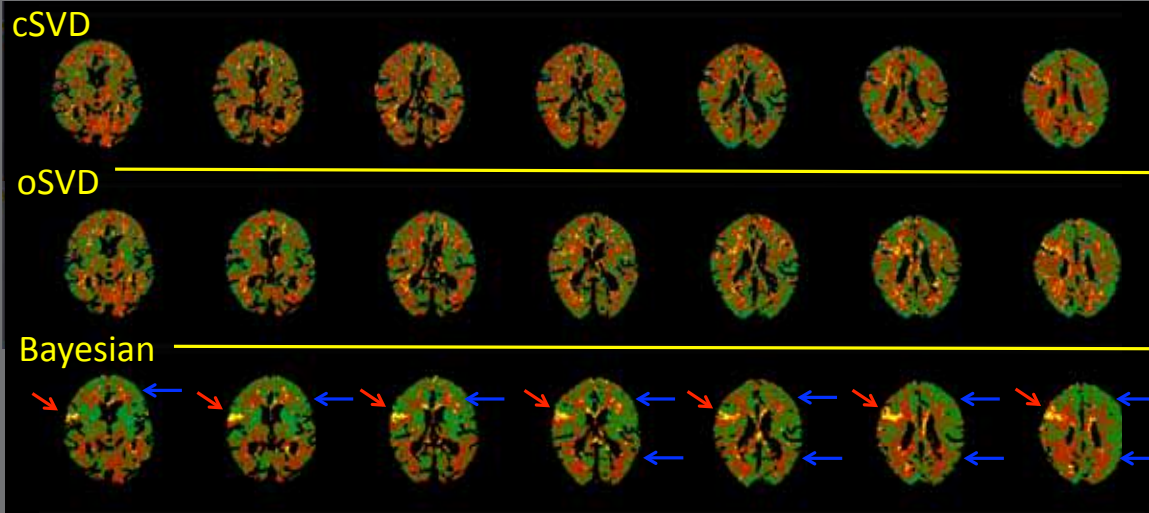


■ Example of Bayesian processing for CT perfusion images.

We notice a stroke located in M3 cortical MCA territory. A high quality distinction between white and grey brain matter on all the Bayesian maps can be observed.

CT POST-PROCESSING

MTT maps (acute MCA M3 occlusion)



➔ High resolution demarcation between white and grey matter

22 slices

■ The distinction between grey and white matter and ischemic lesion is not clear on MTT maps with cSVD and oSVD deconvolution methods. There are remaining artefacts that could lead to an overestimation of the ischemic area.

The Bayesian processing solves this problem and perfectly delimits the stroke on the MTT map (red pointers). The difference between grey and white matter is also more clearly defined (blue pointers).