

# Case Report

CT Perfusion  
Bayesian  
Post-processing

Case 1

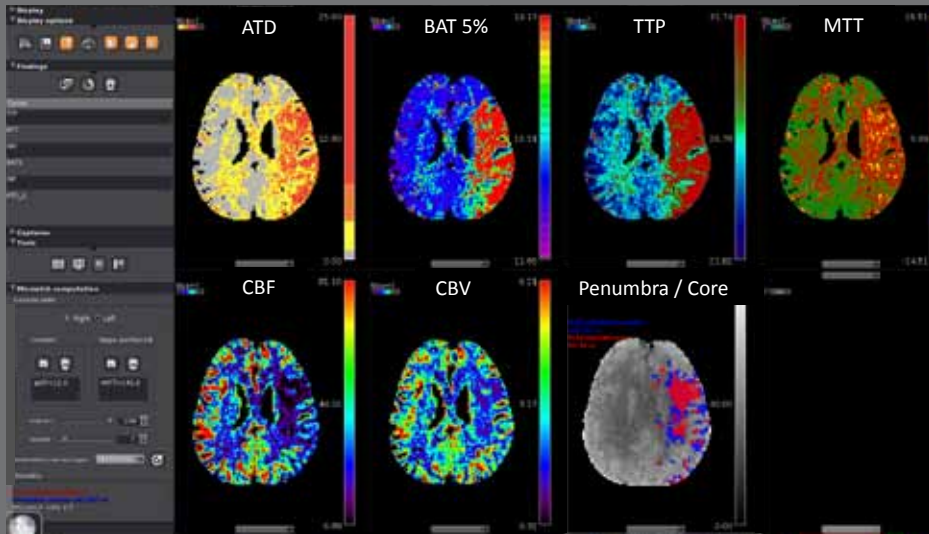


Olea Medical  
93, avenue des Sorbiers  
13600 La Ciotat - FRANCE  
TEL +33 (0)4 42 71 24 20  
FAX +33 (0)4 42 71 24 27  
contact@olea-medical.com

Olea Medical USA  
1955 Massachusetts Avenue  
Suite 12 & 14  
02140 Cambridge, MA



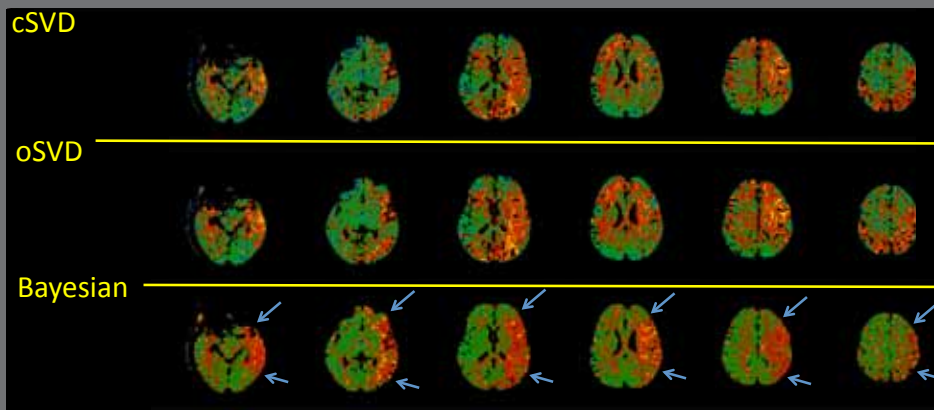
**BAYESIAN CT POST-PROCESSING**



■ Example of Bayesian processing for CT perfusion images.  
One can notice an acute stroke on the left MCA territory.

**CT POST-PROCESSING**

MTT maps (acute MCA M1 occlusion)

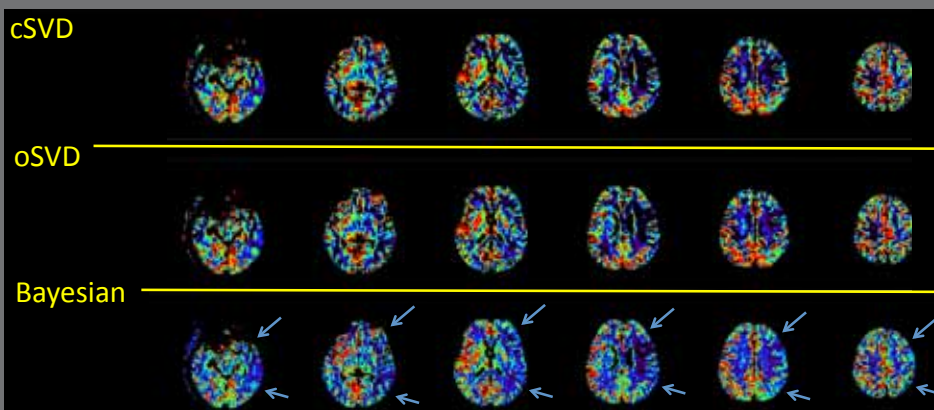


■ The distinction between grey and white matter and ischemic lesion is not clear on MTT maps with cSVD and oSVD deconvolution methods. There are remaining artefacts that could lead to an overestimation of ischemic area.  
  
The Bayesian processing solves this problem and perfectly delimits the stroke on the MTT map (blue pointers).

➤ True theoretical borders of the MCA territory

**12 slices**

CBF maps (acute MCA M1 occlusion)



■ Bayesian processing offers more consistent CBF maps and a clear emphasize on a decrease in cortical CBF in the whole left MCA territory (blue pointers) whereas it seems mainly preserved in the left MCA territory with cSVD and oSVD methods.

➤ True theoretical borders of the MCA territory

**12 slices**